



# STGF3NC120HD

N-CHANNEL 3A - 1200V TO-220FP

FAST PowerMESH™ IGBT with Integral Damper Diode

Table 1: General Features

TYPE	V <sub>CES</sub>	V <sub>CE(sat)</sub> (Max) @25°C	I <sub>C</sub> @100°C
STGF3NC120HD	1200 V	< 2.8 V	3 A

- LOW ON-VOLTAGE DROP (V<sub>cesat</sub>)
- HIGH CURRENT CAPABILITY
- OFF LOSSES INCLUDE TAIL CURRENT
- HIGH SPEED

### DESCRIPTION

This PowerMESH™ IGBT is designed using the latest high voltage technology based on a patented strip layout. A new lifetime control allows good switching performance and low voltage drop. This IGBT featuring a co-packaged diode is optimized for horizontal deflection applications in small and medium sets.

### APPLICATIONS

- HORIZONTAL DEFLECTION
- HOME APPLIANCE
- LIGHTING

Figure 1: Package

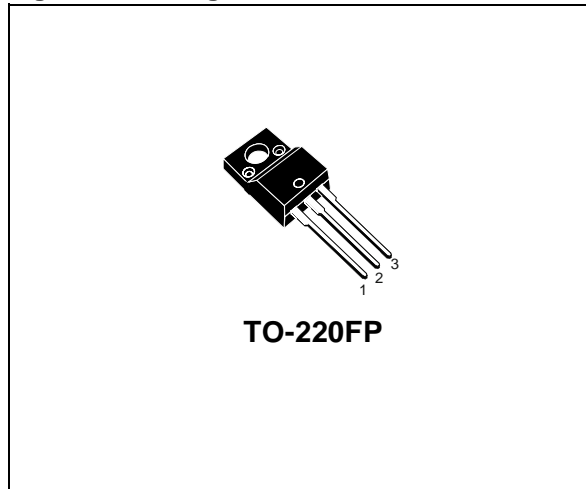


Figure 2: Internal Schematic Diagram

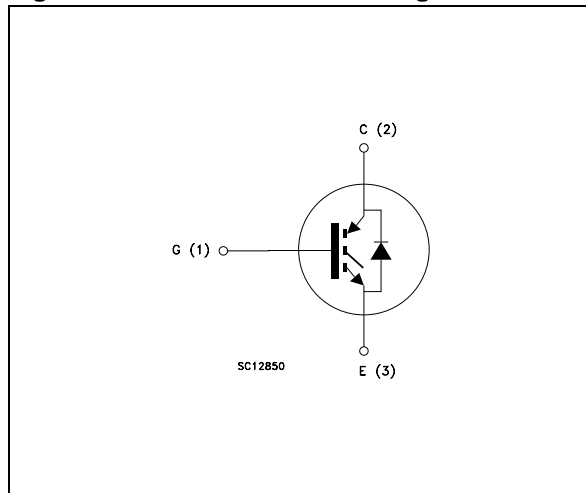


Table 2: Order Code

PART NUMBER	MARKING	PACKAGE	PACKAGING
STGF3NC120HD	GF3NC120HD	TO-220FP	TUBE

**Table 3: Absolute Maximum ratings**

Symbol	Parameter	Value	Unit
$V_{CES}$	Collector-Emitter Voltage ( $V_{GS} = 0$ )	1200	V
$V_{ECR}$	Emitter-Collector Voltage	20	V
$V_{GE}$	Gate-Emitter Voltage	$\pm 20$	V
$I_C$	Collector Current (continuous) at $T_C = 25^\circ\text{C}$	6	A
$I_C$	Collector Current (continuous) at $T_C = 100^\circ\text{C}$	3	A
$I_{CM}$ (■)	Collector Current (pulsed)	10	A
$P_{TOT}$	Total Dissipation at $T_C = 25^\circ\text{C}$	25	W
	Derating Factor	0.20	W/ $^\circ\text{C}$
$V_{ISO}$	Insulation withstand voltage AC ( $t=1\text{sec}$ , $T_c=25^\circ\text{C}$ )	2500	V
$T_{stg}$	Storage Temperature	-55 to 150	$^\circ\text{C}$
$T_j$	Operating Junction Temperature range		

(■) Pulse width limited by safe operating area

**Table 4: Thermal Data**

		Min.	Typ.	Max.	
$R_{thj-case}$	Thermal Resistance Junction-case			5.0	$^\circ\text{C}/\text{W}$
$R_{thj-amb}$	Thermal Resistance Junction-ambient			62.5	$^\circ\text{C}/\text{W}$
$T_L$	Maximum Lead Temperature for Soldering Purpose (1.6 mm from case, for 10 sec.)		300		$^\circ\text{C}$

**ELECTRICAL CHARACTERISTICS ( $T_{CASE} = 25^\circ\text{C}$  UNLESS OTHERWISE SPECIFIED)**
**Table 5: On/Off**

Symbol	Parameter	Test Conditions	Min.	Typ.	Max.	Unit
$V_{BR(CES)}$	Collector-Emitter Breakdown Voltage	$I_C = 1\text{ mA}$ , $V_{GE} = 0$	1200			V
$I_{CES}$	Collector cut-off Current ( $V_{GE} = 0$ )	$V_{CE} = \text{Max Rating}$ , $T_C = 25^\circ\text{C}$ $V_{CE} = \text{Max Rating}$ , $T_C = 125^\circ\text{C}$			50 1	$\mu\text{A}$ mA
$I_{GES}$	Gate-Emitter Leakage Current ( $V_{CE} = 0$ )	$V_{GE} = \pm 20\text{V}$ , $V_{CE} = 0$			$\pm 100$	nA
$V_{GE(th)}$	Gate Threshold Voltage	$V_{CE} = V_{GE}$ , $I_C = 250\ \mu\text{A}$	2		5	V
$V_{CE(sat)}$	Collector-Emitter Saturation Voltage	$V_{GE} = 15\text{V}$ , $I_C = 3\text{ A}$ $V_{GE} = 15\text{V}$ , $I_C = 3\text{ A}$ , $T_c = 125^\circ\text{C}$		2.3 2.2	2.8	V V

## ELECTRICAL CHARACTERISTICS (CONTINUED)

Table 6: Dynamic

Symbol	Parameter	Test Conditions	Min.	Typ.	Max.	Unit
$g_{fs}$ (1)	Forward Transconductance	$V_{CE} = 25 \text{ V}$ , $I_C = 3 \text{ A}$		4		S
$C_{ies}$	Input Capacitance	$V_{CE} = 25 \text{ V}$ , $f = 1 \text{ MHz}$ , $V_{GE} = 0$		470		pF
$C_{oes}$	Output Capacitance			45		pF
$C_{res}$	Reverse Transfer Capacitance			6		pF
$Q_g$ $Q_{ge}$ $Q_{gc}$	Total Gate Charge Gate-Emitter Charge Gate-Collector Charge	$V_{CC} = 960 \text{ V}$ , $I_C = 3 \text{ A}$ , $V_{GE} = 15 \text{ V}$ (see Figure 22)		24 3 10	32	nC nC nC
$I_{CL}$	Turn-off SOA minimum current	$V_{clamp} = 960 \text{ V}$ , $T_j = 150^\circ\text{C}$ $R_G = 10 \Omega$ , $V_{GE} = 15 \text{ V}$	10			A

(1) Pulsed: Pulse duration= 300  $\mu\text{s}$ , duty cycle 1.5%

Table 7: Switching On

Symbol	Parameter	Test Conditions	Min.	Typ.	Max.	Unit
$t_{d(on)}$ $t_r$ $(di/dt)_{on}$	Turn-on Delay Time Current Rise Time Turn-on Current Slope	$V_{CC} = 800 \text{ V}$ , $I_C = 3 \text{ A}$ $R_G = 10 \Omega$ , $V_{GE} = 15 \text{ V}$ , $T_j = 25^\circ\text{C}$ (see Figure 20)		15 3.5 880		ns ns A/ $\mu\text{s}$
$t_{d(on)}$ $t_r$ $(di/dt)_{on}$	Turn-on Delay Time Current Rise Time Turn-on Current Slope	$V_{CC} = 480 \text{ V}$ , $I_C = 3 \text{ A}$ $R_G = 10 \Omega$ , $V_{GE} = 15 \text{ V}$ , $T_j = 125^\circ\text{C}$ (see Figure 20)		14.5 4 770		ns ns A/ $\mu\text{s}$

Table 8: Switching Off

Symbol	Parameter	Test Conditions	Min.	Typ.	Max.	Unit
$t_r(V_{off})$ $t_{d(off)}$ $t_f$	Off Voltage Rise Time Turn-off Delay Time Current Fall Time	$V_{CC} = 800 \text{ V}$ , $I_C = 3 \text{ A}$ , $R_G = 10 \Omega$ , $V_{GE} = 15 \text{ V}$ $T_j = 25^\circ\text{C}$ (see Figure 20)		72 118 250		ns ns ns
$t_r(V_{off})$ $t_{d(off)}$ $t_f$	Off Voltage Rise Time Turn-off Delay Time Current Fall Time	$V_{CC} = 800 \text{ V}$ , $I_C = 3 \text{ A}$ , $R_G = 10 \Omega$ , $V_{GE} = 15 \text{ V}$ $T_j = 125^\circ\text{C}$ (see Figure 20)		132 210 470		ns ns ns

Table 9: Switching Energy

Symbol	Parameter	Test Conditions	Min.	Typ.	Max.	Unit
$E_{on}$ (2) $E_{off}$ (3) $E_{ts}$	Turn-on Switching Losses Turn-off Switching Loss Total Switching Loss	$V_{CC} = 800 \text{ V}$ , $I_C = 3 \text{ A}$ $R_G = 10 \Omega$ , $V_{GE} = 15 \text{ V}$ , $T_j = 25^\circ\text{C}$ (see Figure 21)		236 290 526		$\mu\text{J}$ $\mu\text{J}$ $\mu\text{J}$
$E_{on}$ (2) $E_{off}$ (3) $E_{ts}$	Turn-on Switching Losses Turn-off Switching Loss Total Switching Loss	$V_{CC} = 800 \text{ V}$ , $I_C = 3 \text{ A}$ $R_G = 10 \Omega$ , $V_{GE} = 15 \text{ V}$ , $T_j = 125^\circ\text{C}$ (see Figure 21)		360 620 980		$\mu\text{J}$ $\mu\text{J}$ $\mu\text{J}$

(2)  $E_{on}$  is the turn-on losses when a typical diode is used in the test circuit in figure 2. If the IGBT is offered in a package with a co-pack diode, the co-pack diode is used as external diode. IGBTs & DIODE are at the same temperature ( $25^\circ\text{C}$  and  $125^\circ\text{C}$ )

(3) Turn-off losses include also the tail of the collector current.

Table 10: Collector-Emitter Diode

Symbol	Parameter	Test Conditions	Min.	Typ.	Max	Unit
$I_f$ $I_{fm}$	Forward Current Forward Current pulsed				3 12	A A
$V_f$	Forward On-Voltage	$I_f = 1.5\text{ A}$ $I_f = 1.5\text{ A}, T_j = 125^\circ\text{C}$		1.6 1.3	2.0	V V
$t_{rr}$ $Q_{rr}$ $I_{rm}$	Reverse Recovery Time Reverse Recovery Charge Reverse Recovery Current	$I_f = 3\text{ A}, V_R = 40\text{ V}$ $T_j = 25^\circ\text{C}, di/dt = 100\text{ A}/\mu\text{s}$ (see Figure 23)		51 85 3.3		ns nC A
$t_{rr}$ $Q_{rr}$ $I_{rm}$	Reverse Recovery Time Reverse Recovery Charge Reverse Recovery Current	$I_f = 3\text{ A}, V_R = 40\text{ V}$ $T_j = 125^\circ\text{C}, di/dt = 100\text{ A}/\mu\text{s}$ (see Figure 23)		64 133 4.2		ns nC A

Figure 3: Output Characteristics

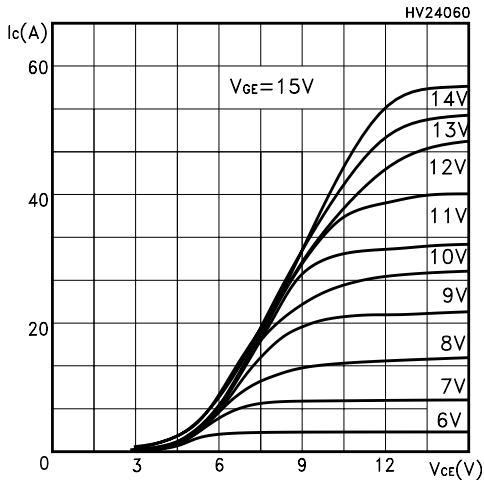


Figure 4: Transconductance

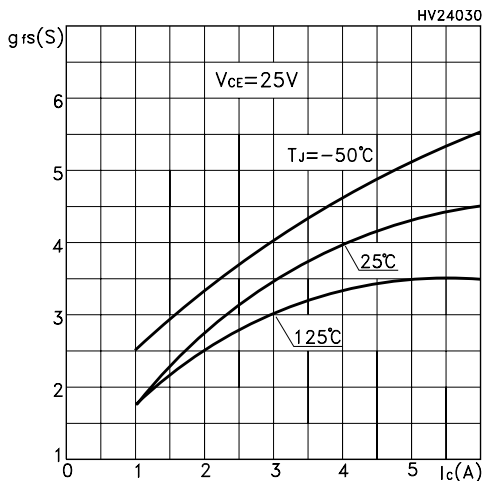


Figure 5: Collector-Emitter On Voltage vs Collector Current

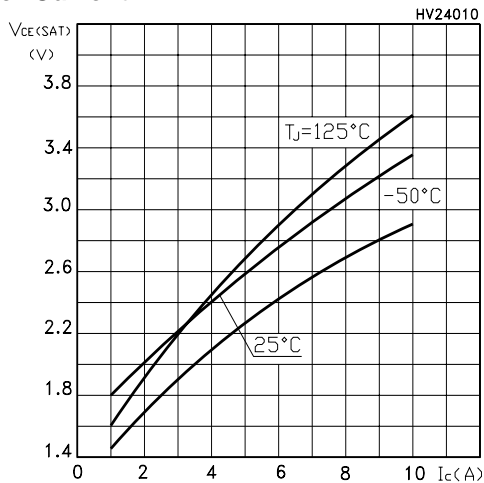


Figure 6: Transfer Characteristics

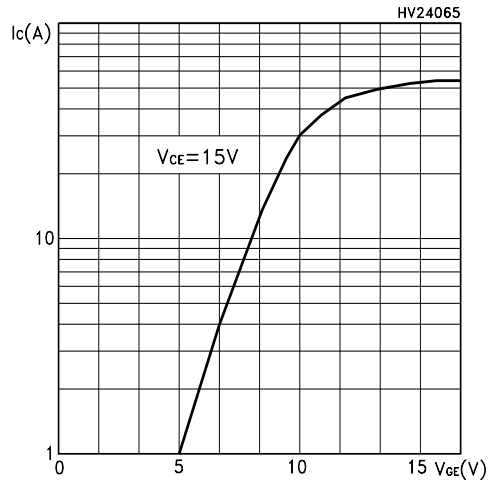


Figure 7: Collector-Emitter On Voltage vs Temperature

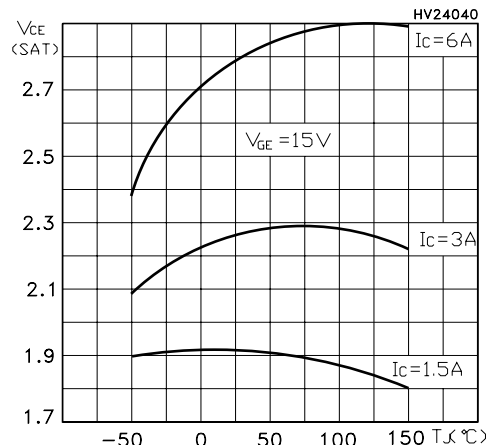


Figure 8: Normalized Gate Threshold vs Temperature

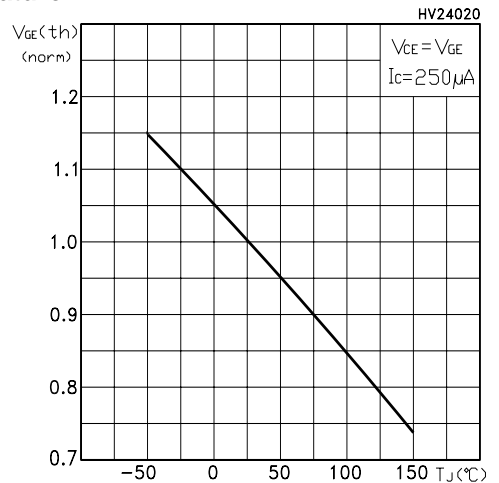


Figure 9: Normalized Breakdown Voltage vs Temperature

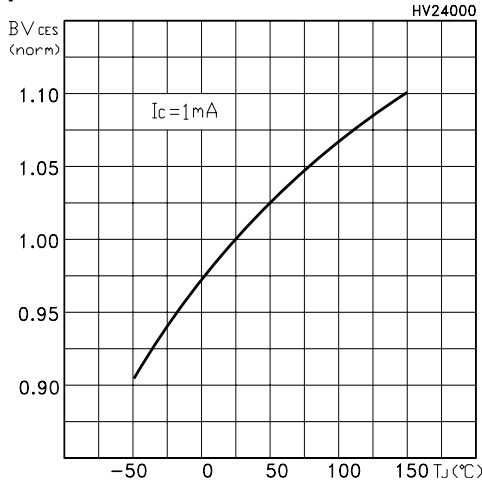


Figure 10: Capacitance Variations

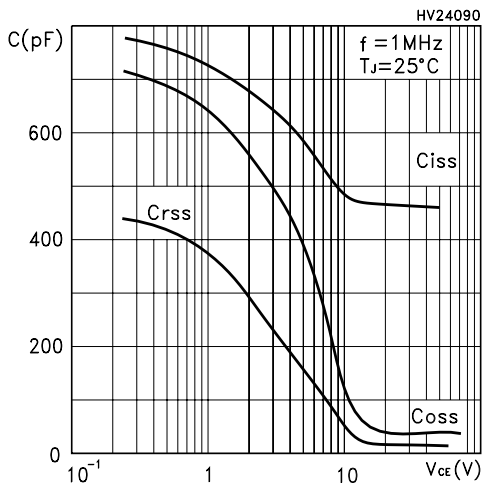


Figure 11: Switching Losses vs Gate Resistance

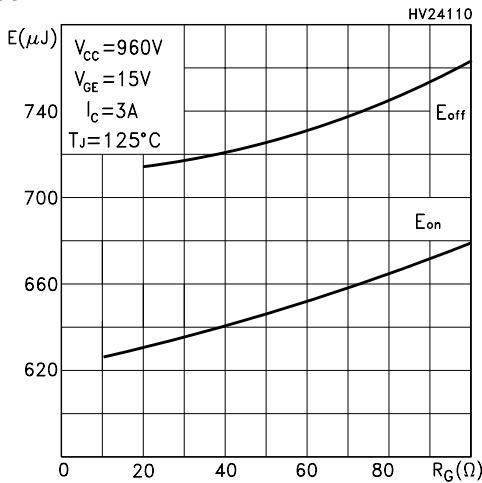


Figure 12: Gate Charge vs Gate-Emitter Voltage

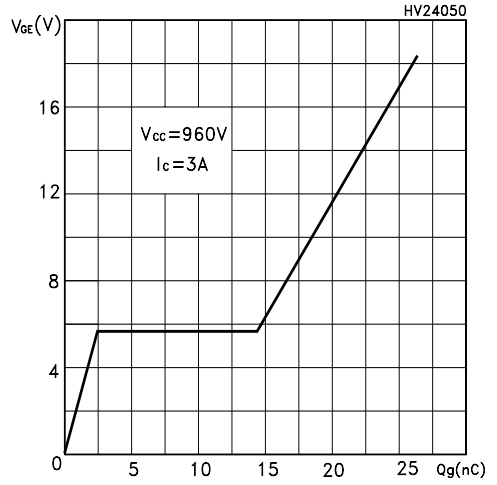


Figure 13: Switching Losses vs Temperature

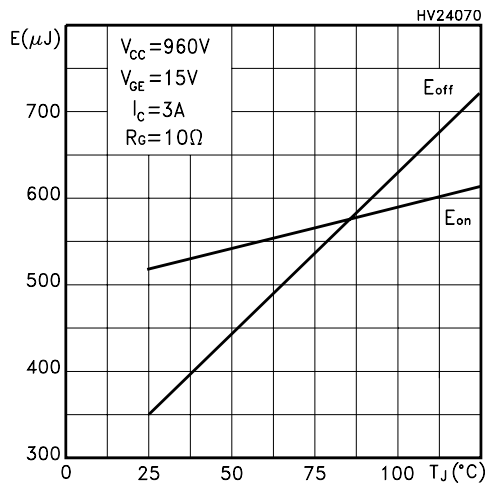


Figure 14: Switching Losses vs Collector Current

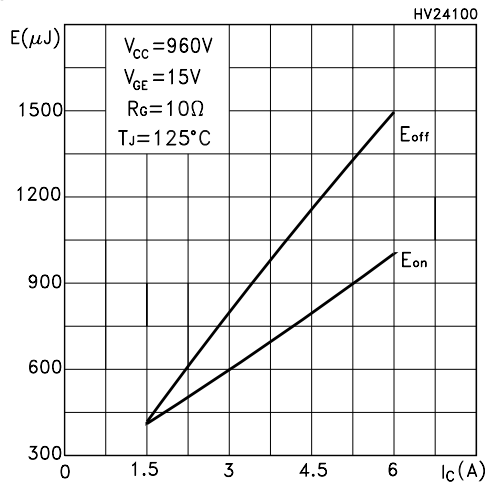


Figure 15: Thermal Impedance

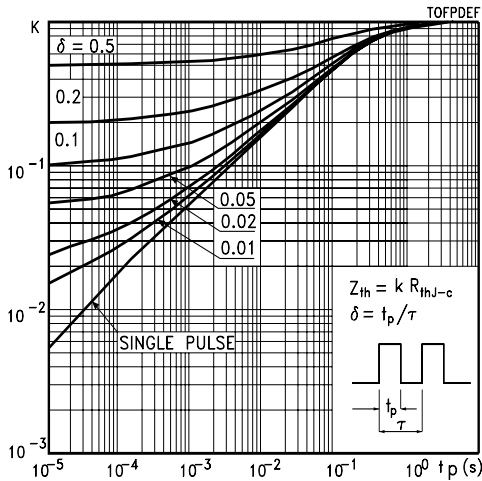


Figure 16: Collector-Emitter Diode Characteristics

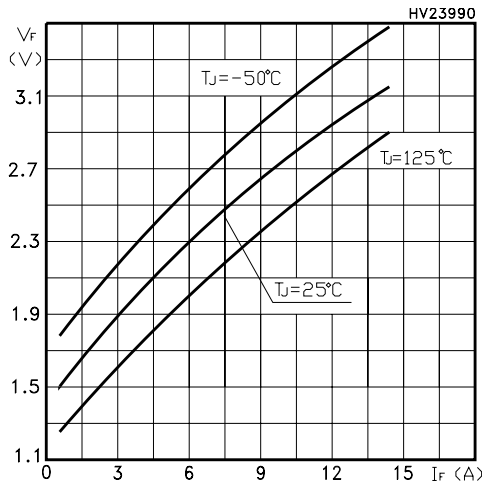


Figure 17: Turn-Off SOA

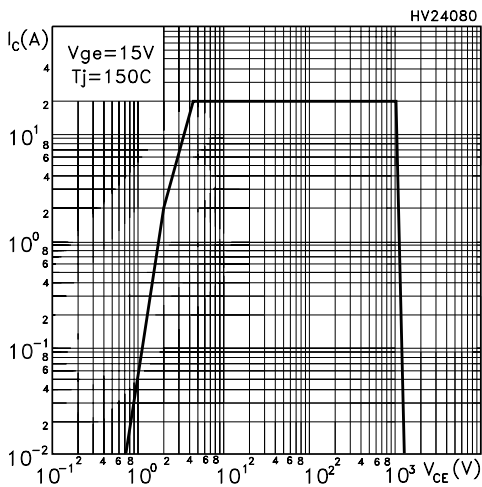


Figure 18: Power Losses

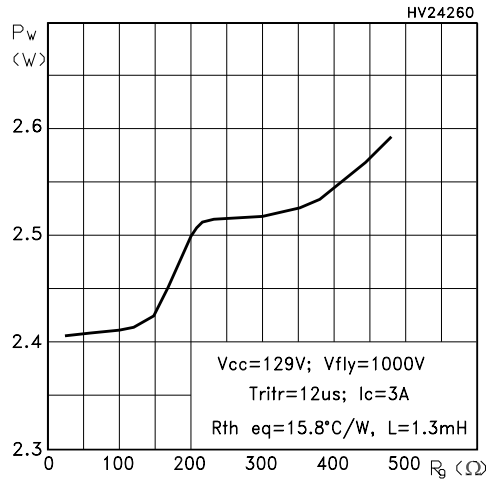


Figure 19: Power Losses

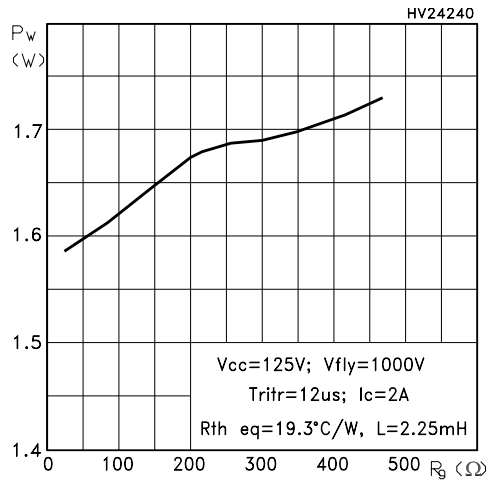


Figure 20: Test Circuit for Inductive Load Switching

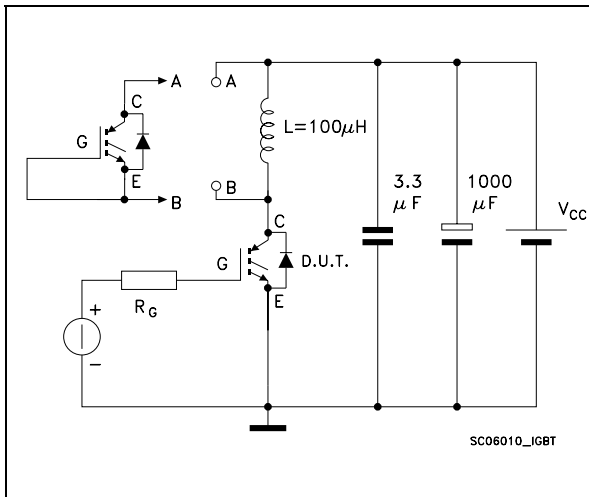


Figure 21: Switching Waveforms

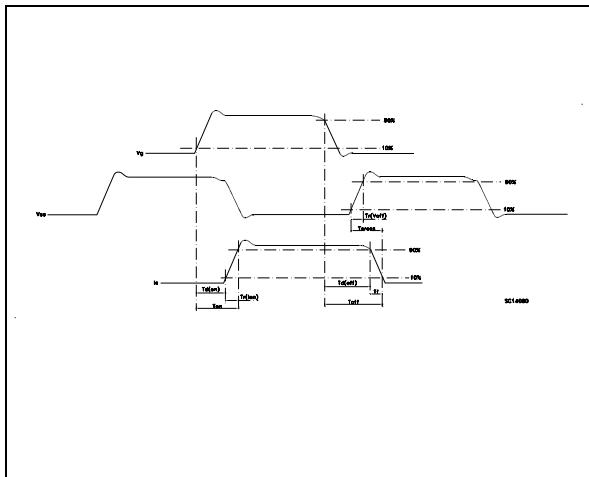


Figure 22: Gate Charge Test Circuit

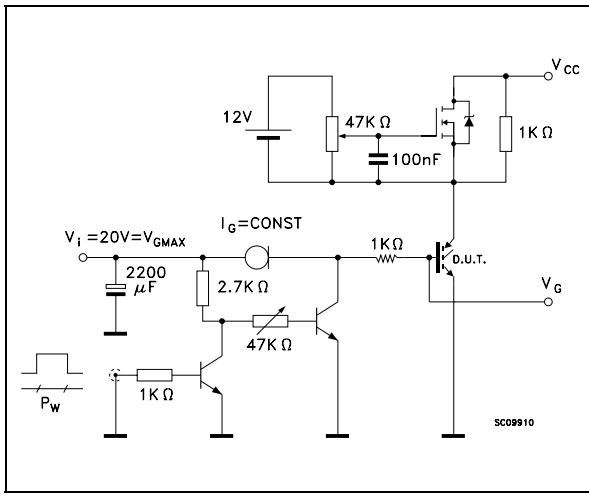
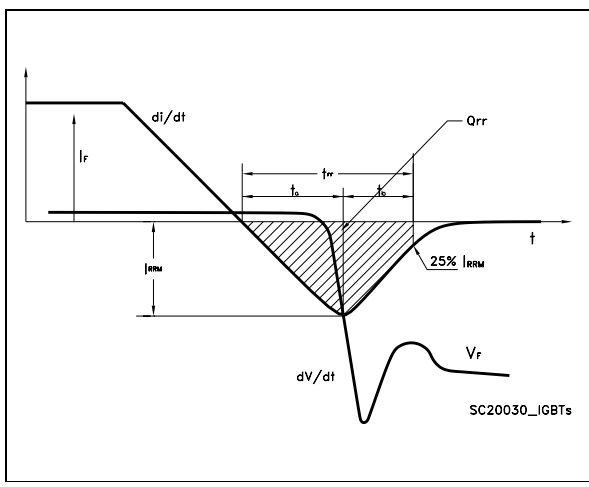


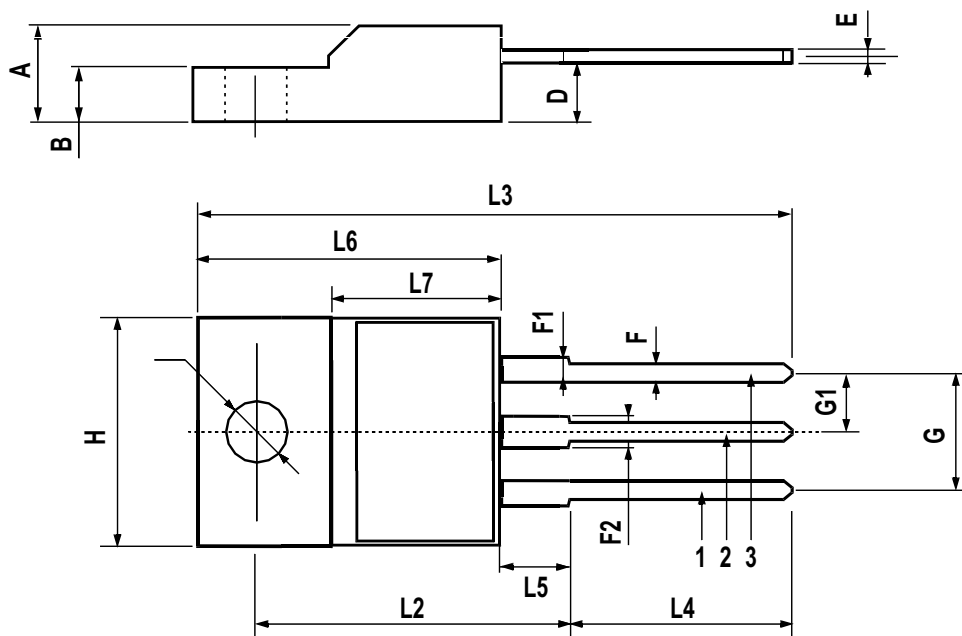
Figure 23: Diode Recovery Time Waveforms





## TO-220FP MECHANICAL DATA

DIM.	mm.			inch		
	MIN.	TYP.	MAX.	MIN.	TYP.	MAX.
A	4.4		4.6	0.173		0.181
B	2.5		2.7	0.098		0.106
D	2.5		2.75	0.098		0.108
E	0.45		0.7	0.017		0.027
F	0.75		1	0.030		0.039
F1	1.15		1.7	0.045		0.067
F2	1.15		1.7	0.045		0.067
G	4.95		5.2	0.195		0.204
G1	2.4		2.7	0.094		0.106
H	10		10.4	0.393		0.409
L2		16			0.630	
L3	28.6		30.6	1.126		1.204
L4	9.8		10.6	.0385		0.417
L5	2.9		3.6	0.114		0.141
L6	15.9		16.4	0.626		0.645
L7	9		9.3	0.354		0.366
Ø	3		3.2	0.118		0.126



**Table 11: Revision History**

<b>Date</b>	<b>Revision</b>	<b>Description of Changes</b>
13-Dec-2004	1	First release
21-Jan-2005	2	Modified Curve 17

Information furnished is believed to be accurate and reliable. However, STMicroelectronics assumes no responsibility for the consequences of use of such information nor for any infringement of patents or other rights of third parties which may result from its use. No license is granted by implication or otherwise under any patent or patent rights of STMicroelectronics. Specifications mentioned in this publication are subject to change without notice. This publication supersedes and replaces all information previously supplied. STMicroelectronics products are not authorized for use as critical components in life support devices or systems without express written approval of STMicroelectronics.

The ST logo is a registered trademark of STMicroelectronics

All other names are the property of their respective owners

© 2005 STMicroelectronics - All Rights Reserved

STMicroelectronics group of companies

Australia - Belgium - Brazil - Canada - China - Czech Republic - Finland - France - Germany - Hong Kong - India - Israel - Italy - Japan - Malaysia - Malta - Morocco - Singapore - Spain - Sweden - Switzerland - United Kingdom - United States of America